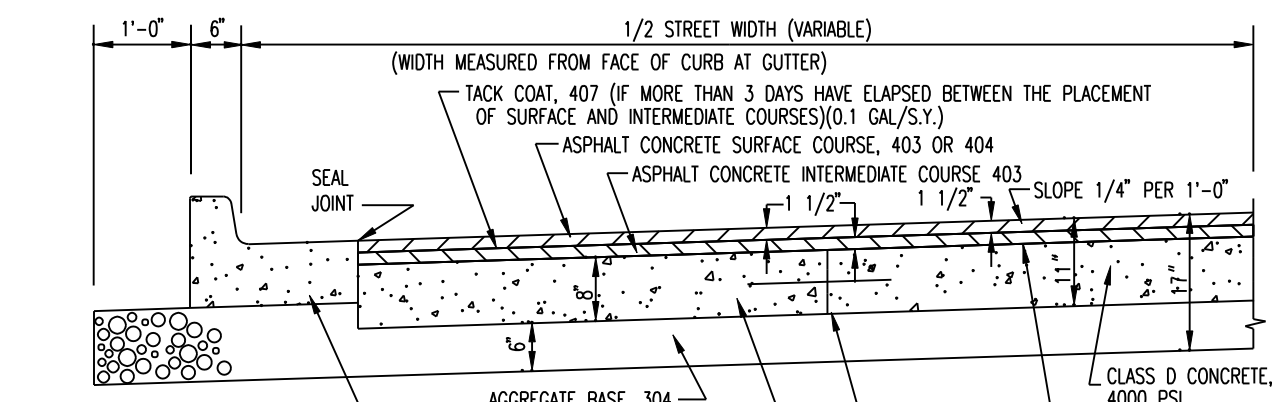
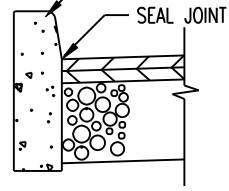


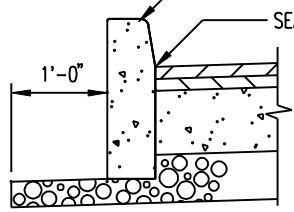
CURBING, 609-CONCRETE BARRIER CURB OR CONCRETE COMBINED BARRIER CURB & GUTTER AS SPECIFIED ON PLANS.

BITUMINOUS STREET PAVEMENT
(NORMALLY RESIDENTIAL TYPE STREETS)
ASPHALT CONCRETE
ON CRUSHED AGGREGATE BASE COURSE



CURBING, 609-CONCRETE BARRIER CURB OR CONCRETE COMBINED BARRIER CURB & GUTTER AS SPECIFIED ON PLANS.

TYPICAL HALF SECTION FOR
BITUMINOUS STREET PAVEMENT
(NORMALLY THOROUGHFARE TYPE STREETS)
ASPHALT CONCRETE
ON CONCRETE BASE COURSE
(TIE AND DOWEL BARS INCLUDED AT ALL JOINTS)



NOTE:
SEE CURB AND GUTTER DETAILS, SHEET 8. REINFORCING IS USED AS SPECIFIED ON THE JOB PLANS.

REVISIONS

STANDARDS FOR
STREET IMPROVEMENTS
TYPICAL PAVEMENT
SECTIONS FOR
BITUMINOUS STREET
PAVEMENT
CITY OF DAYTON, OHIO
NO SCALE 14A-17113